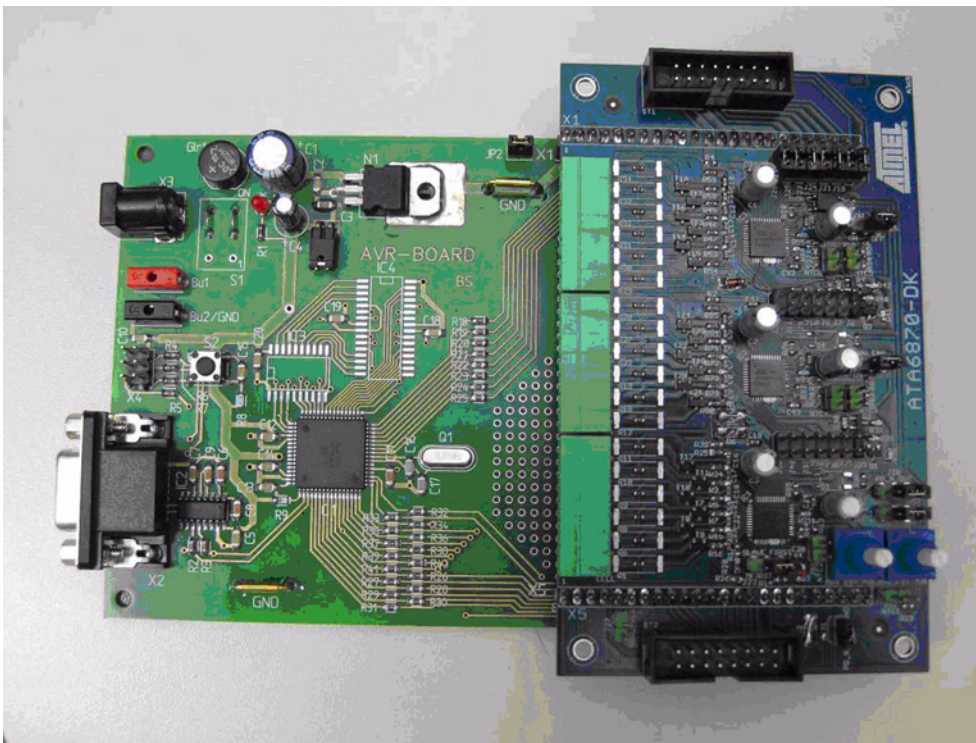


Atmel ATA6870 - Description of Evaluation Board and Control Software

Li-Ion/NiMH Battery Stack Measurement and Monitoring Kit with Atmel ATA6870



1. Introduction

This document provides a description and details on using the Atmel[®] ATA6870 evaluation board for Li-Ion/NiMH Battery Management applications. The evaluation kit consists of two boards:

- Evaluation board with Atmel ATA6870 and external MOSFETs for charge balancing
- Controller board with the Atmel microcontroller ATmega128

For a comfortable control of the evaluation board, a graphical user interface is available.

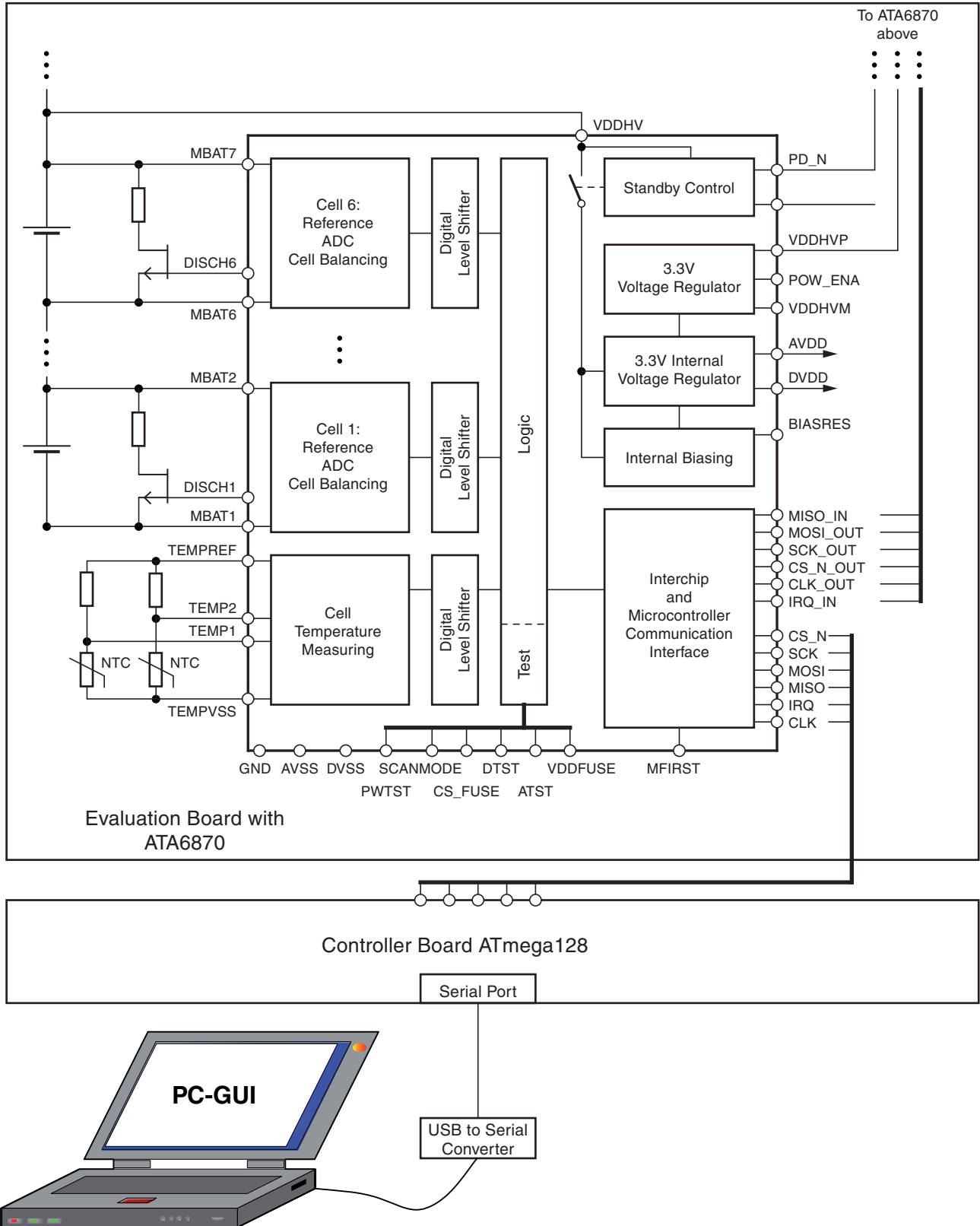


Atmel ATA6870 Description of Evaluation Board

Application Note

2. Evaluation System

Figure 2-1. Evaluation Concept



Atmel ATA6870 Description of Evaluation Board

The Atmel® ATA6870 is designed for the measurement and monitoring of Li-ion and NiMH multicell battery stacks in hybrid electrical vehicles.

Battery cell voltage and battery cell temperature are monitored in parallel by the related 12-bit ADC.

The circuit also provides charge balancing capability for each battery cell by controlling the external discharge N-channel MOSFETs.

To supply power to a microcontroller or other external components, a linear regulator is integrated in Atmel ATA6870.

Levelshifters with current sources ensure a reliable communication between stacked ICs.

Three to six battery cells can be connected to the Atmel ATA6870 and up to 16 ICs can be cascaded to one chain.

The Atmel ATA6870 evaluation board is controlled by the Atmel ATmega128 controller board via a graphical user interface (GUI), see [Figure 2-1 on page 2](#). A USB to serial converter is provided, in case a serial port is not available on the PC.

2.1 System Start

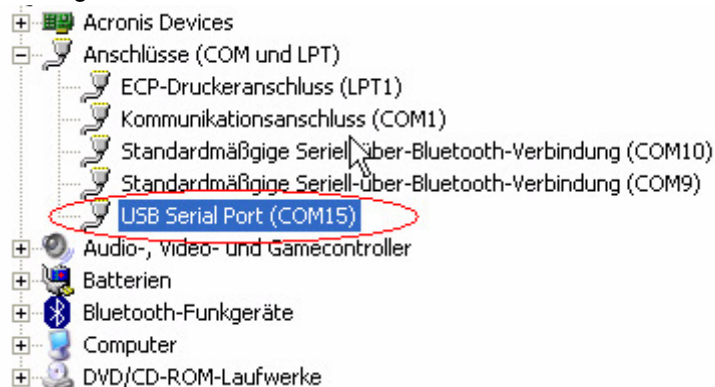
To run the evaluation system, the following installation steps are necessary.

2.1.1 Hardware Installation

- Connect the Atmel ATA6870 evaluation board to the controller board at the pin header connectors X1 and X5
- Apply a 12V power supply to the X3 controller board connector
--> The lit red LED indicates the enabled status of the evaluation board
- Connect the battery cell stack to be measured or the enclosed emulator (see document “Battery_Emulator_ATA6870_71_v11.pdf”) to the green screw connectors on the evaluation board, see [Figure 2-3 on page 4](#).
- In case of emulator use, apply a 48V power supply to the J22 power jack of the Atmel emulator board ATA6870-DK2.
- To control the evaluation board via Graphical User Interface, connect to the PC by serial interface, respectively USB to serial converter to the serial connector of the controller board.

A “Digitus” USB to serial converter is included in the evaluation kit.

Figure 2-2. Assigned USB Serial Port



2.1.2 Software Installation

2.1.2.1 USB to Serial Converter

- Install the corresponding driver software from the USB driver CD, enclosed with the USB to serial dongle. Attention: Don't let Windows® automatically install the driver.
- Check the assigned USB Serial Port number from the windows system device manager, see [Figure 2-2 on page 3](#).
- Set the assigned COM port number in the “standard user” panel (upper right corner), as described in [Figure 4-1 on page 12](#), as soon the Graphical User interface is installed and running.

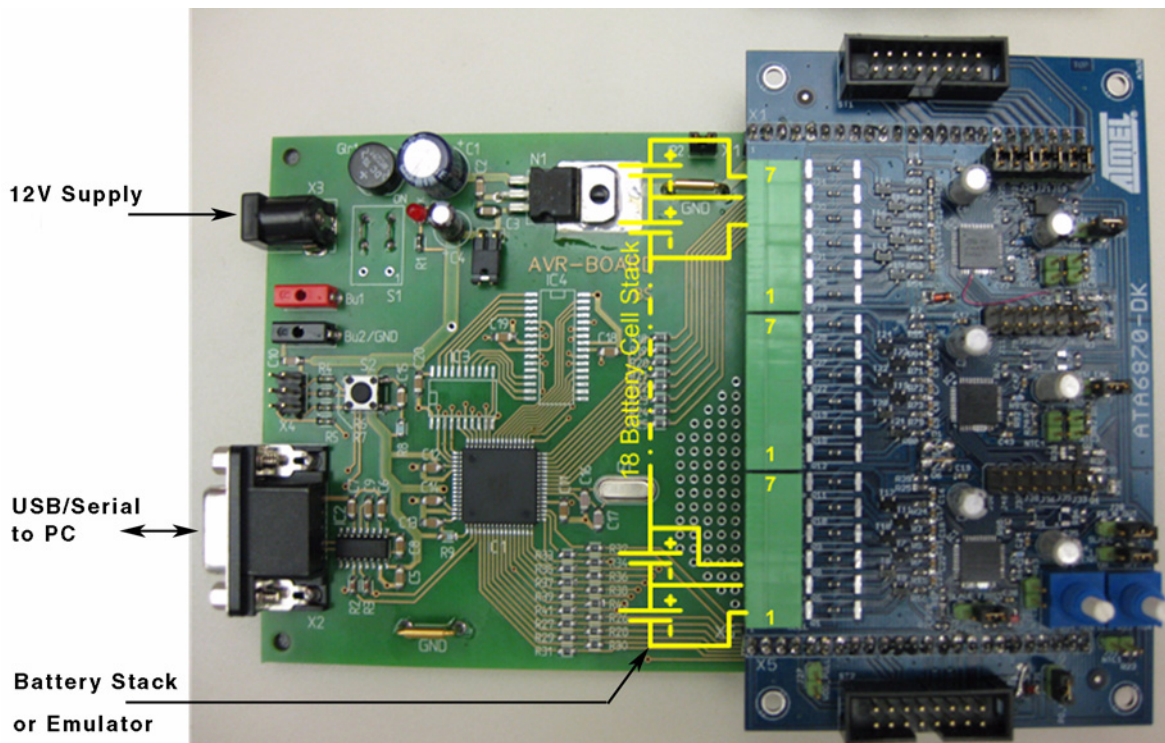
2.1.2.2 Graphical User Interface (GUI)

- Copy the folder “ATA6870 Battery Monitor Installer+exe” to a local drive on the PC
- Execute the “setup.exe” file to install all necessary support files
- Execute the file “ATA6870 Battery Monitor.exe” to run the Graphical User Interface (GUI)

2.1.3 Communication Check

To see whether the communication between PC and controller board is established or not, toggle the power down button PDN on the “standard user” panel ([Figure 4-1 on page 12](#)). A proper communication exists when the red LED ([Figure 3-2 on page 6](#)) on the evaluation board switches on/off.

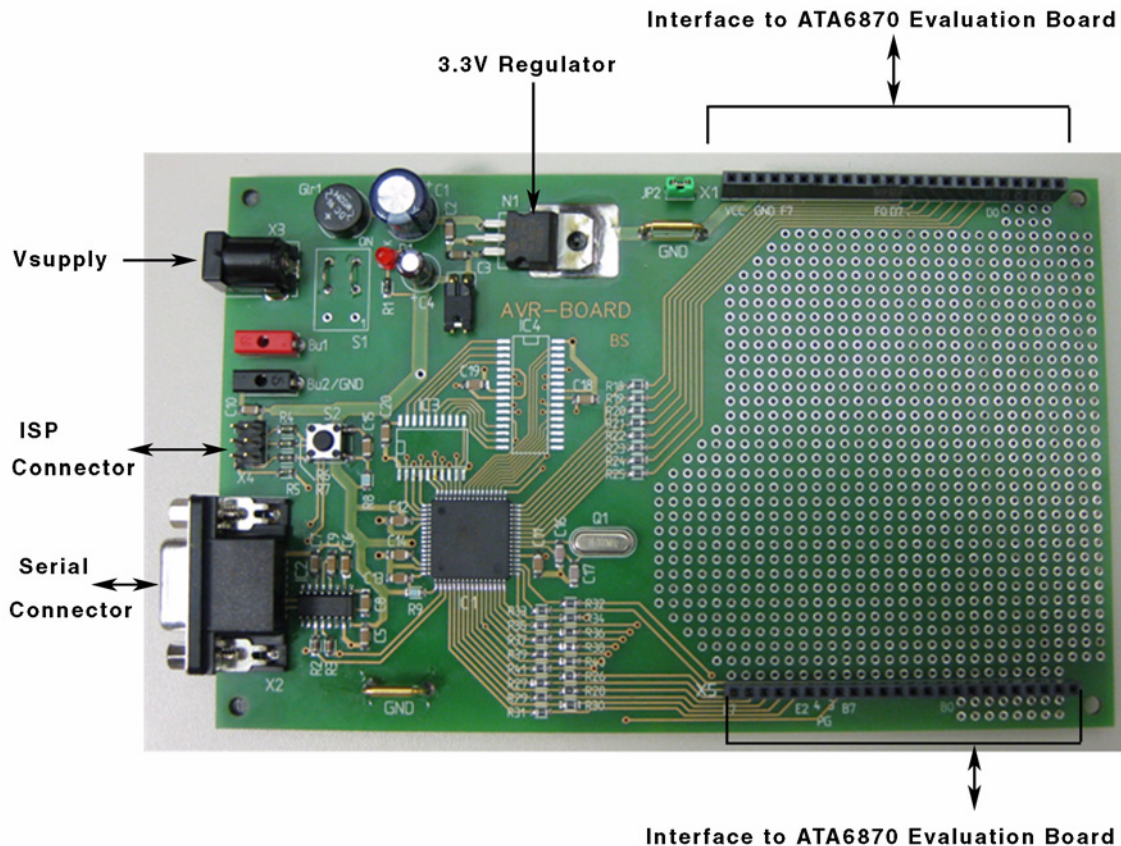
Figure 2-3. Evaluation Setup



3. Application Board

3.1 Controller Board

Figure 3-1. Controller Board



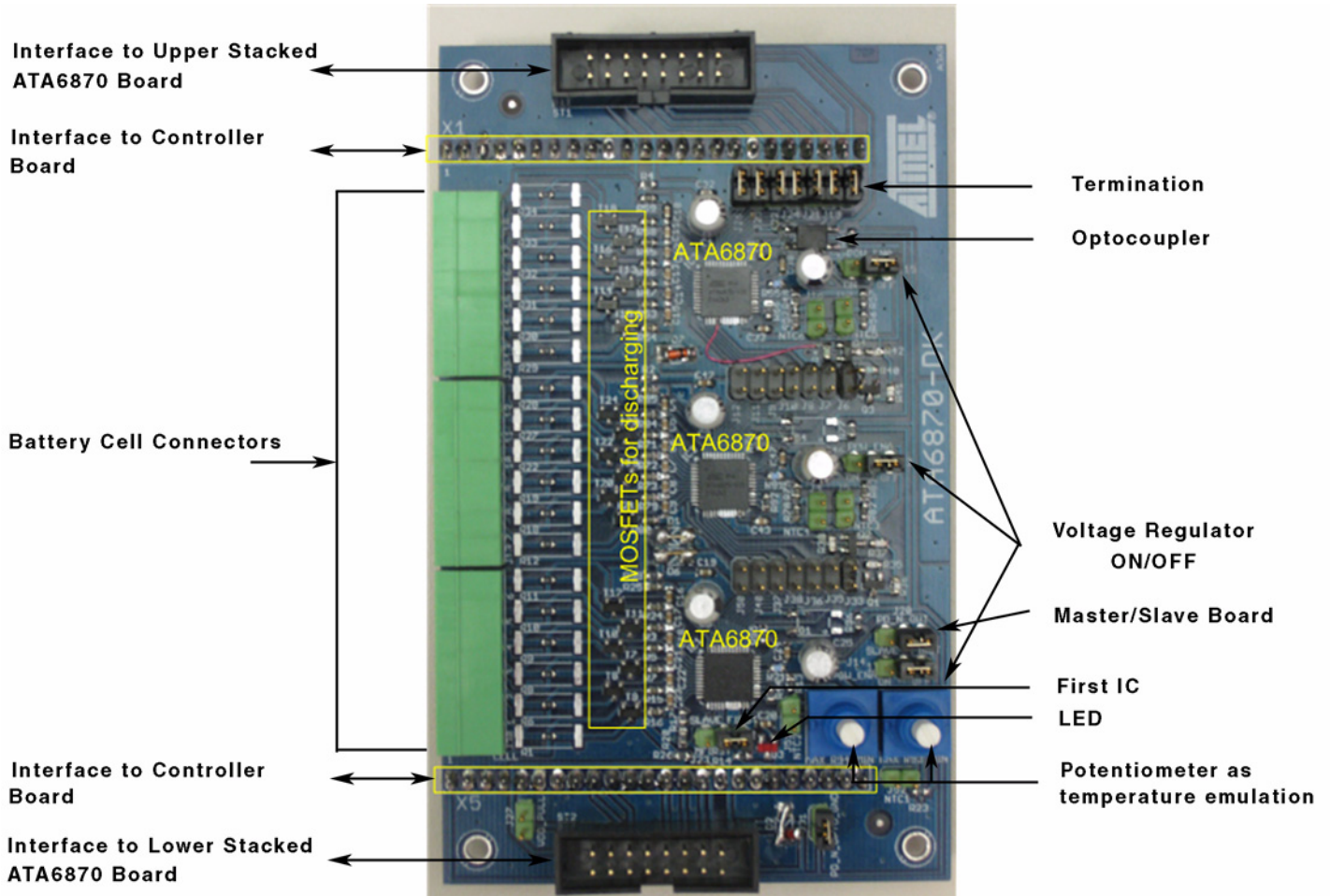
3.1.1 On-board Features

The controller board provides the following items:

- Atmel® ATmega128 QFN64 9x9 mm
 - 8-bit AVR® microcontroller
 - 16-MHZ system clock
 - VCC regulator for 3.3V operation
- Connectors
 - Pinheader interface X1 and X5 to Atmel ATA6870 Evaluation Board
 - 6-pin ISP connector for In-System Programming using JTAGICEmkII
 - Serial connector for PC communication
 - Supply connector

3.2 Evaluation Board

Figure 3-2. Evaluation Board with 3 Stacked Atmel® ATA6870



3.2.1 On-board Features

The evaluation board provides the following items:

- Atmel ATA6870 QFN 7x7 mm
 - 12-bit battery cell voltage measurement
 - Simultaneous battery cells measurement in parallel
 - Charge balancing capability
 - Cell temperature measurement
 - Undervoltage detection
 - Integrated power supply for MCU
 - Reliable communication between stacked ICs
- 18 external N-channel MOSFETs for balancing of battery cells
- On-board potentiometers as temperature emulation

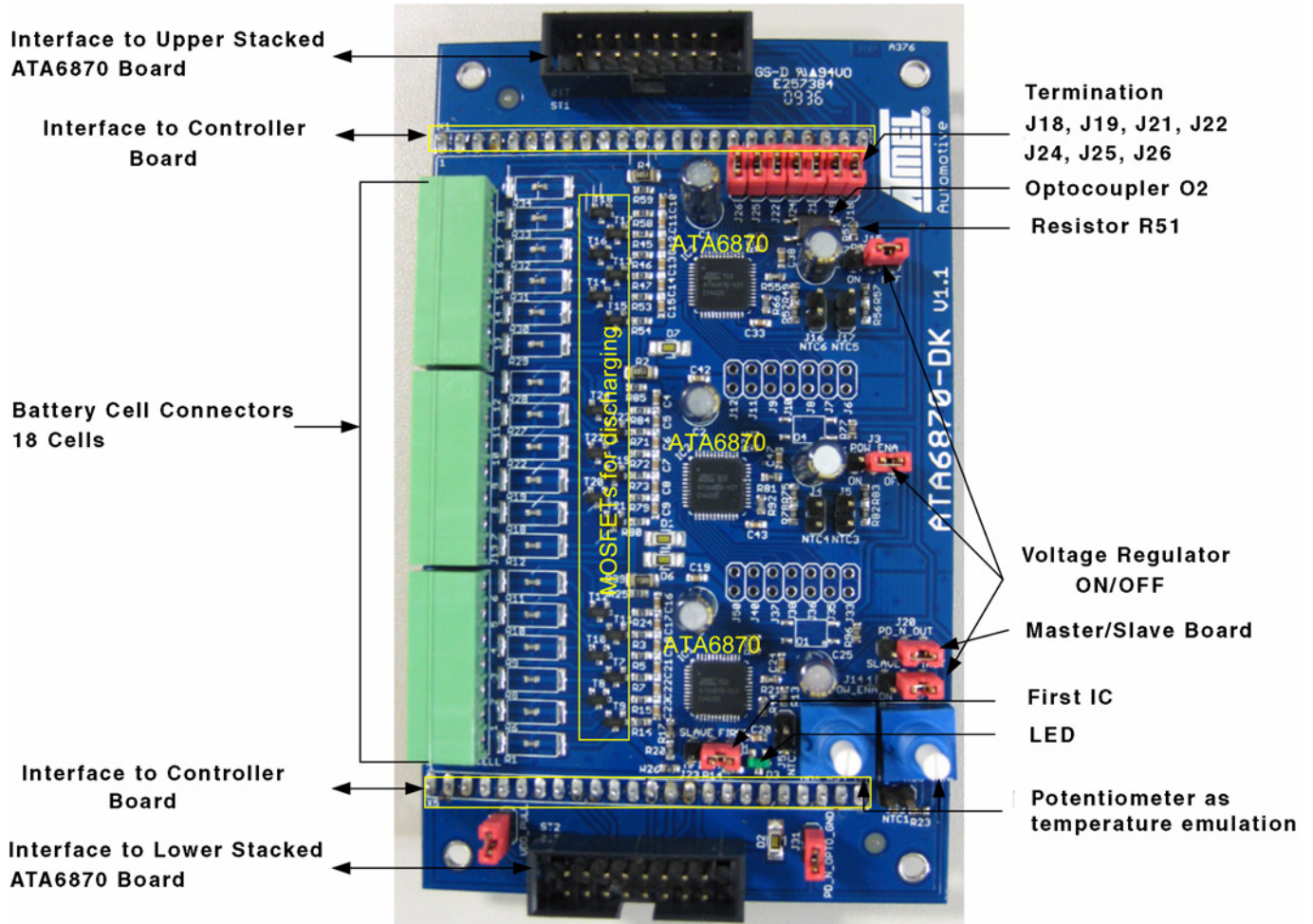
Atmel ATA6870 Description of Evaluation Board

- Connectors
 - Pin header interface X1 and X5 to controller board
 - Screw connectors for connecting up to 18 battery cells
 - 16-pin connector for stacking several evaluation boards

3.2.2 Board Configuration for 3 IC Operation

The evaluation board is assembled with 3 stacked devices of Atmel® ATA6870. The configuration regarding jumpers (J), optocouplers (O) and resistors (R) is as follows:

Figure 3-3. Configuration for 3 IC Operation Atmel ATA6870



3.2.2.1 *Board Definition Master/Slave*

Since several evaluation boards can be stacked to a string, the respective board has to be configured as master or slave.

Single boards are configured as master board.

Default: PD_N_OUT connected to GND (first) by Jumper J20

3.2.2.2 *First Device*

The lowest device in a string is defined by MFIRST jumper J23.

Default: set to first

To pull up the MCU input pins MISO and IRQ on MCU high level, the VDD_PULL Jumper J27 has to be ON, if no external VDD_MCU supply is available.

Default: J27 is OFF, when evaluation board is operated together with controller board.

3.2.2.3 *Termination*

For the highest IC of the stack, the lines IRQ_IN, CLK_OUT, CS_N_OUT, SCK_OUT, MOSI_OUT, MISO_IN and VDDHVP need to be terminated.

--> by default the jumpers J18, 19, 21, 22, 24-26 are set

3.2.2.4 *Power Down/Enable*

The enable/disable of the 3 Atmel® ATA6870 on the evaluation board is executed by an optocoupler.

Only the highest IC in the application needs to be switched on/off. The lower ICs are enabled/disabled via daisy chain.

--> only optocoupler O2 is populated on the evaluation board

By default, the GND connection of the optocoupler is set by jumper J31 (PD_N_OPTO_GND to GND).

The evaluation board is automatically enabled by the controller board Pin "PD_N_OPTO_HI" of the X5 board interface connector.

3.2.2.5 *Temperature Measurement*

IC1 Configuration - By default, the potentiometers R93 and R94 are populated at the temperature measuring inputs Temp1 and Temp2 to emulate the battery cell temperature, sensed by NTC1 and NTC2.

Optional NTC resistors can be installed at the jumpers J51 and J52.

IC2 Configuration - a 3k3 voltage divider is realized at the inputs Temp1 and Temp2. Optional NTC resistors can be installed at the jumpers J4 and J5. In that case, the default 3k3 resistors R78 and R82 have to be removed.

IC3 Configuration - a 3k3 voltage divider is realized at the inputs Temp1 and Temp2. Optional NTC resistors can be installed at the jumpers J16 and J17. In that case, the default 3k3 resistors R52 and R56 have to be removed.

3.2.2.6 *Integrated Voltage Regulator*

To supply external components, e.g. MCU, an internal 3.3V voltage regulator is implemented in Atmel® ATA6870. For the regulator activation, the POW_ENA Jumpers J3, J14 and 15 have to be set to ON.

The regulator voltage is available at pin “VDDHVM” of the lowest stack IC.

Default: POW_ENA Jumpers J3, J14 and J15 set to OFF

3.2.2.7 *Battery Cell Connection*

The battery stack connection to the Atmel® ATA6870 evaluation board has to be done in the described way:

IC1 cells: connect the first 6 battery cells between clamp 1 and 7 of the lower connector to IC1.

IC2 cells: connect the second 6 battery cells between clamp 1 and 7 of the middle connector to IC2.

IC3 cells: connect the third 6 battery cells between clamp 1 and 7 of the upper connector to IC3.

Clamp 7 of the first connector and clamp 1 of the second connector are connected together on the board, clamp 7 of the second connector and clamp 1 of the third connector as well.

3.2.2.8 *Charge Balancing*

For each IC on the evaluation board, 6 external N-channel MOSFETs are populated to support the charge balancing of the connected battery cells, see [Figure 3-2 on page 6](#). The activation of the respective MOSFET is controlled via the GUI, see [Figure 4-2 on page 13](#).

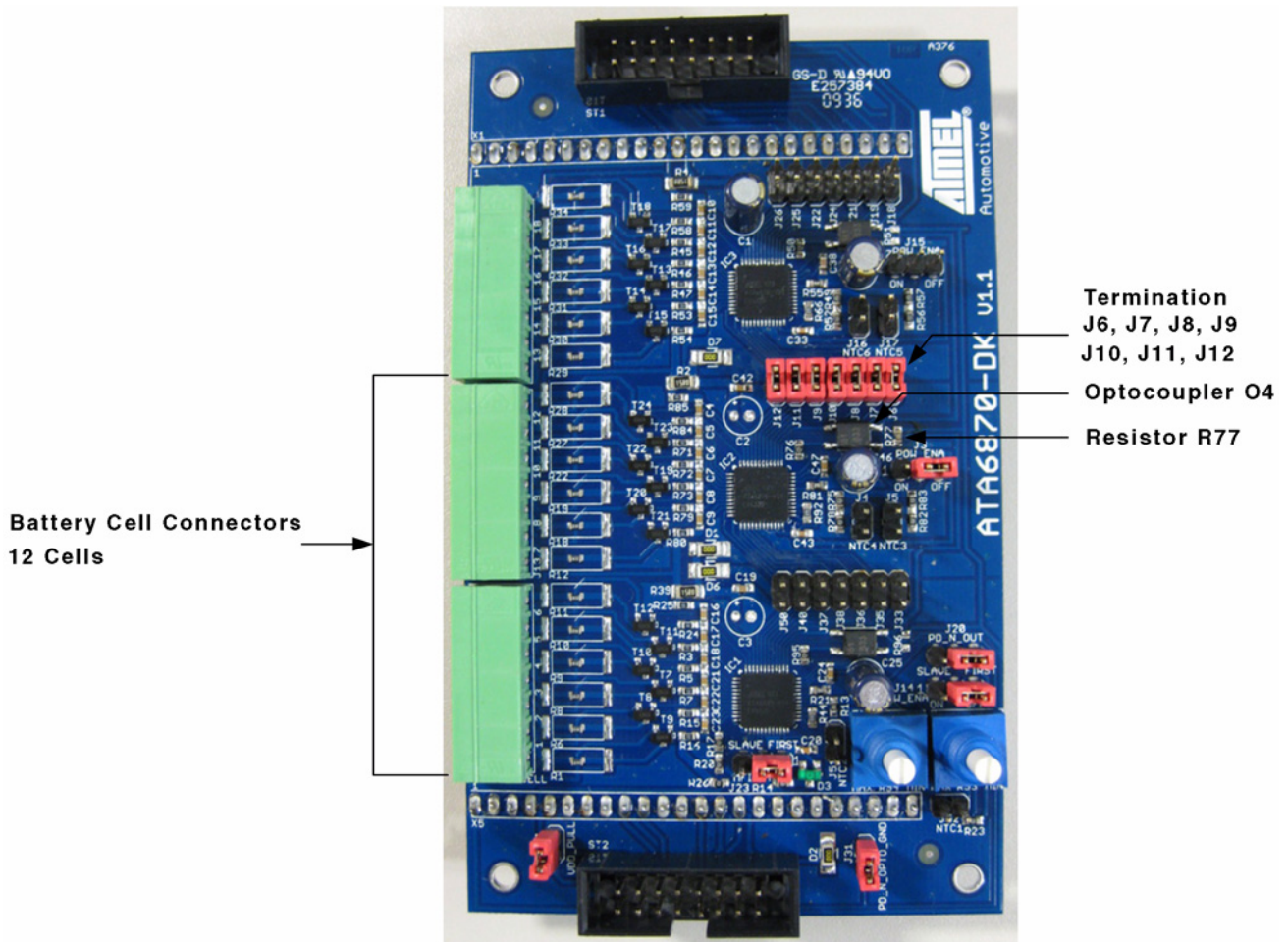
The populated 1k discharge resistors are in a 0603 package. The footprint of the resistors allows the use of resistors with higher power dissipation and package size up to 2512.

3.2.3 Board Configuration for 2 IC Operation - 12 Battery Cells

To operate the evaluation board with only two ATA6870, modifications regarding termination and optocoupler have to be done (see [Figure 3-4](#)).

- Remove termination jumpers J18, J19, J21, J22, J24, J25, J26 from the 3 IC configuration
- Remove optocoupler O2 or resistor R51
- Populate termination jumpers J6, J7, J8, J9, J10, J11, J12
- Populate optocoupler O4 and resistor R77 (330Ω)
- Connect the battery cells or an appropriate battery emulator to the two lower cell connectors of the board (see [Figure 3-4](#)).

Figure 3-4. Configuration for 2 IC (12 Cell) Operation Atmel® ATA6870



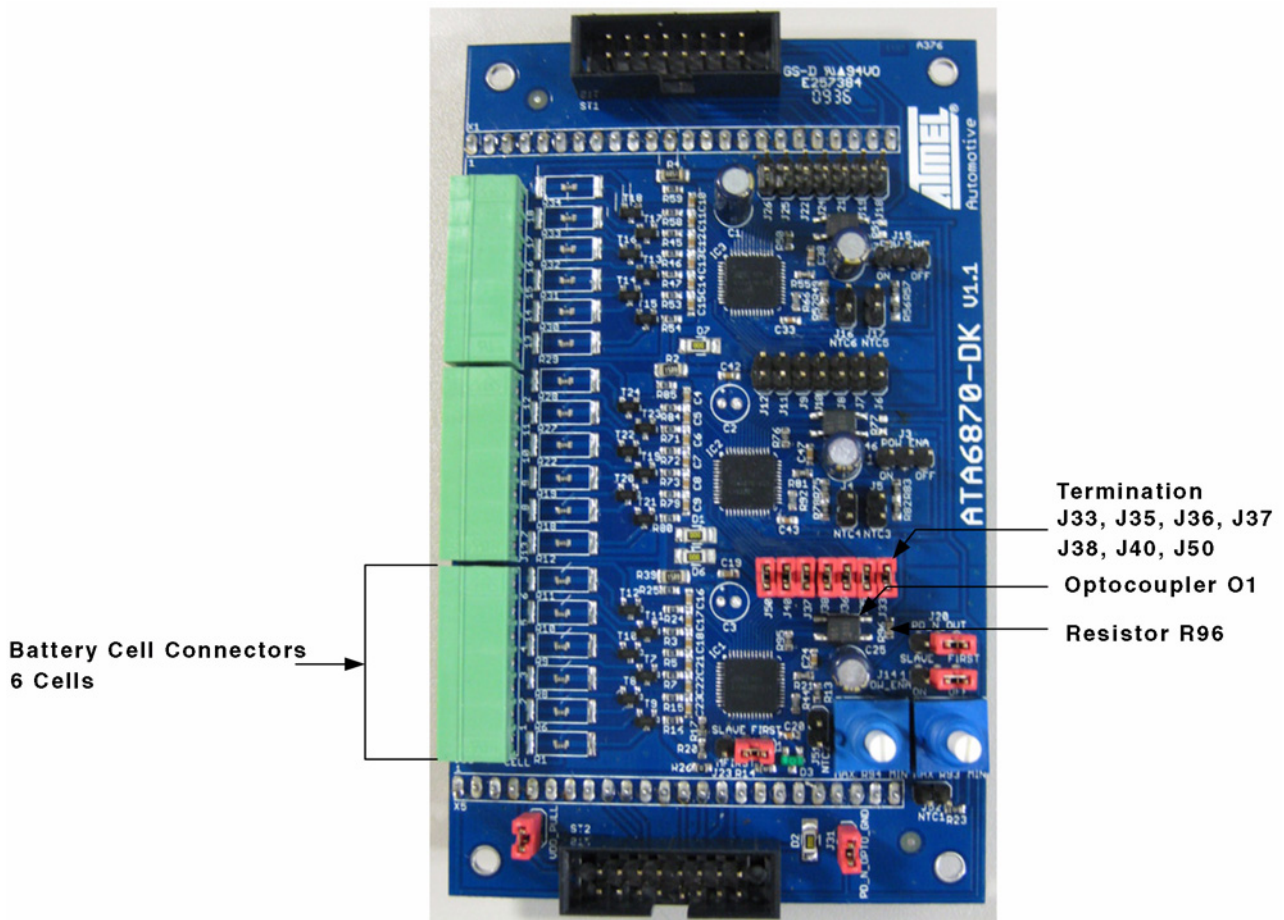
Atmel ATA6870 Description of Evaluation Board

3.2.4 Board Configuration for 1 IC Operation - 6 Battery Cells

To operate the evaluation board with only one Atmel® ATA6870, modifications regarding termination and optocoupler have to be done (see [Figure 3-5](#)).

- Remove termination jumpers J18, J19, J21, J22, J24, J25, J26
- Remove optocoupler O2 or resistor R51
- Populate termination jumpers J33, J35, J36, J37, J38, J40, J50
- Populate optocoupler O1 and resistor R96 (330Ω)
- Connect the battery cells or an appropriate battery emulator to the lowest connector of the board (see [Figure 3-5](#))

Figure 3-5. Configuration for 1 IC (6Cell) Operation Atmel® ATA6870



4. Software Description

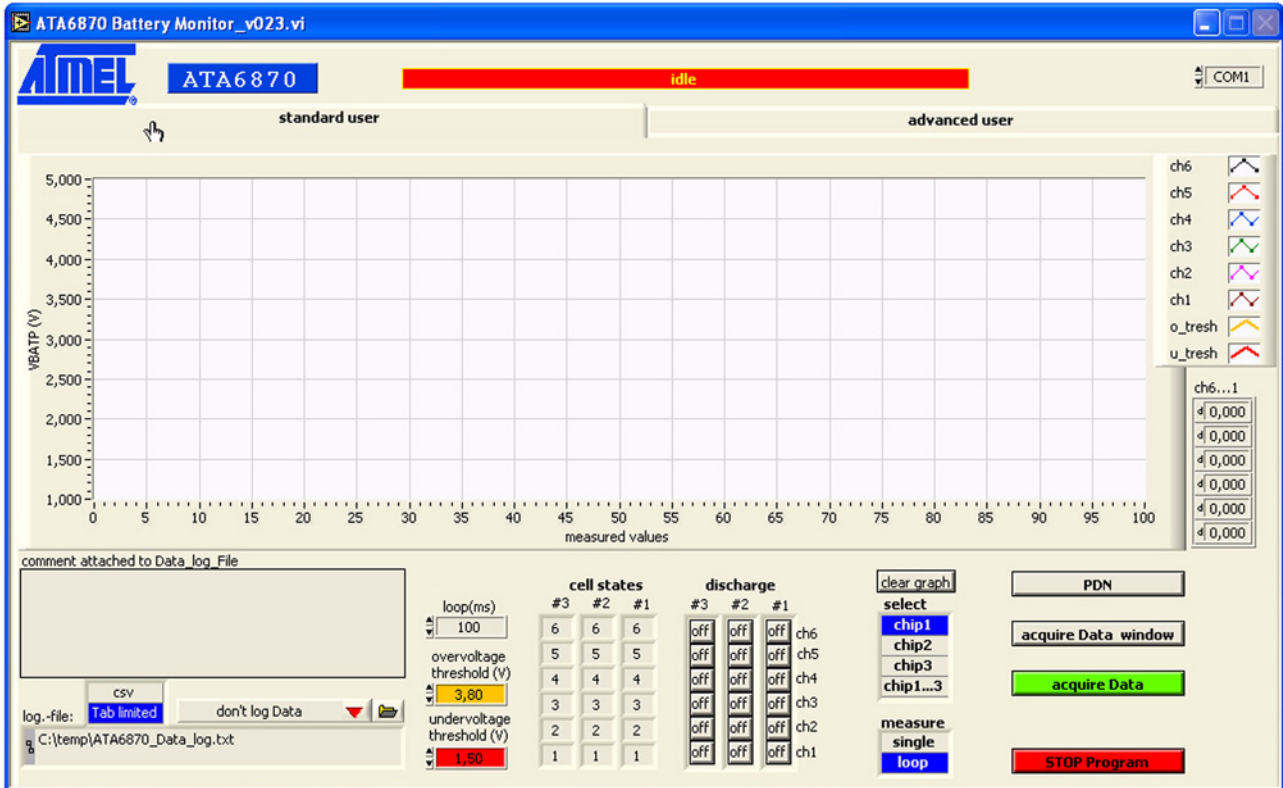
To verify the functions of the application board, a graphical user face is provided.

After the hardware setup and software installation, the GUI is started by executing the “ATA6870 Battery Monitor.exe” file.

4.1 Standard User

With the “standard user” panel, the main functions of Atmel® ATA6870 can be tested.

Figure 4-1. Standard User Control Panel



4.1.1 COM Box

The USB to serial port number of the PC is selected

4.1.2 PDN

The power-down button disables/enables the ICs on the evaluation board.

4.1.3 Select

The data acquisition of chip1, chip2 or chip3 of the evaluation board can be selected. In addition, the data of all chips can be acquired by selecting “chip1...3”

4.1.4 Acquire

The measurement data of the selected chips are acquired.

Atmel ATA6870 Description of Evaluation Board

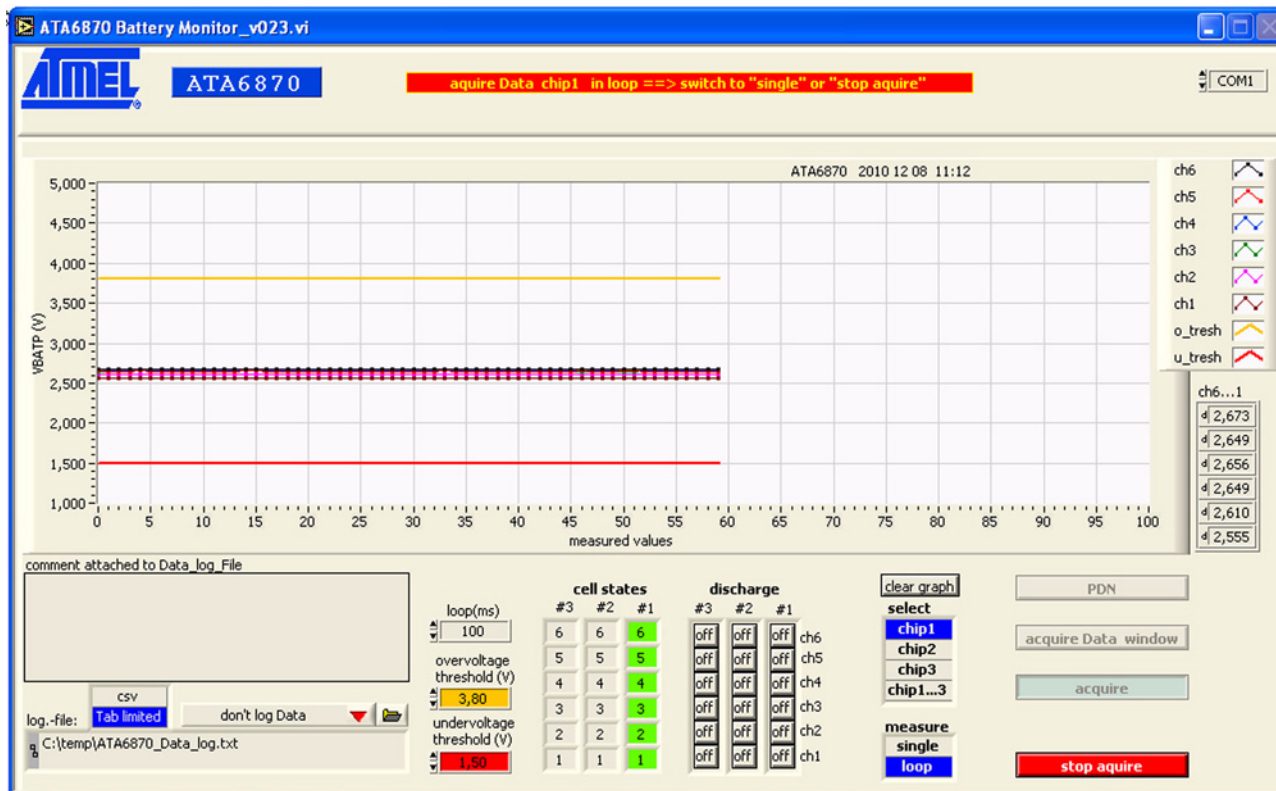
4.1.5 Draw

The draw buttons select the chip, which measurement results are displayed on the screen, in case of “chip1...3” is selected. Otherwise the measurement results of selected chip is displayed automatically.

4.1.6 Measure

The data can be acquired as single shot or in a permanent loop. In loop case, the measurement results are continuously drawn on the screen, see [Figure 4-2](#).

Figure 4-2. Standard User Panel with Loop Acquisition



4.1.7 Discharge

The discharge buttons activate the on board N-channel MOSFET transistors for charge balancing of the corresponding battery cell, see [Figure 4-3 on page 14](#). On the standard user panel the discharge function for 3 ICs (18 battery cells) is provided.

On the “acquire data window” (see [Figure 4-5 on page 16](#)), which can be activated on the “standard user” and “advanced user” panel, the discharge matrix of up to 72 battery cells (12 ICs) is available for a stacked board configuration.

4.1.8 Loop

The loop time for the acquisition cycles can be set.

4.1.9 Overvoltage

A threshold can be defined to detect an overvoltage of the connected battery cells.

4.1.10 Undervoltage

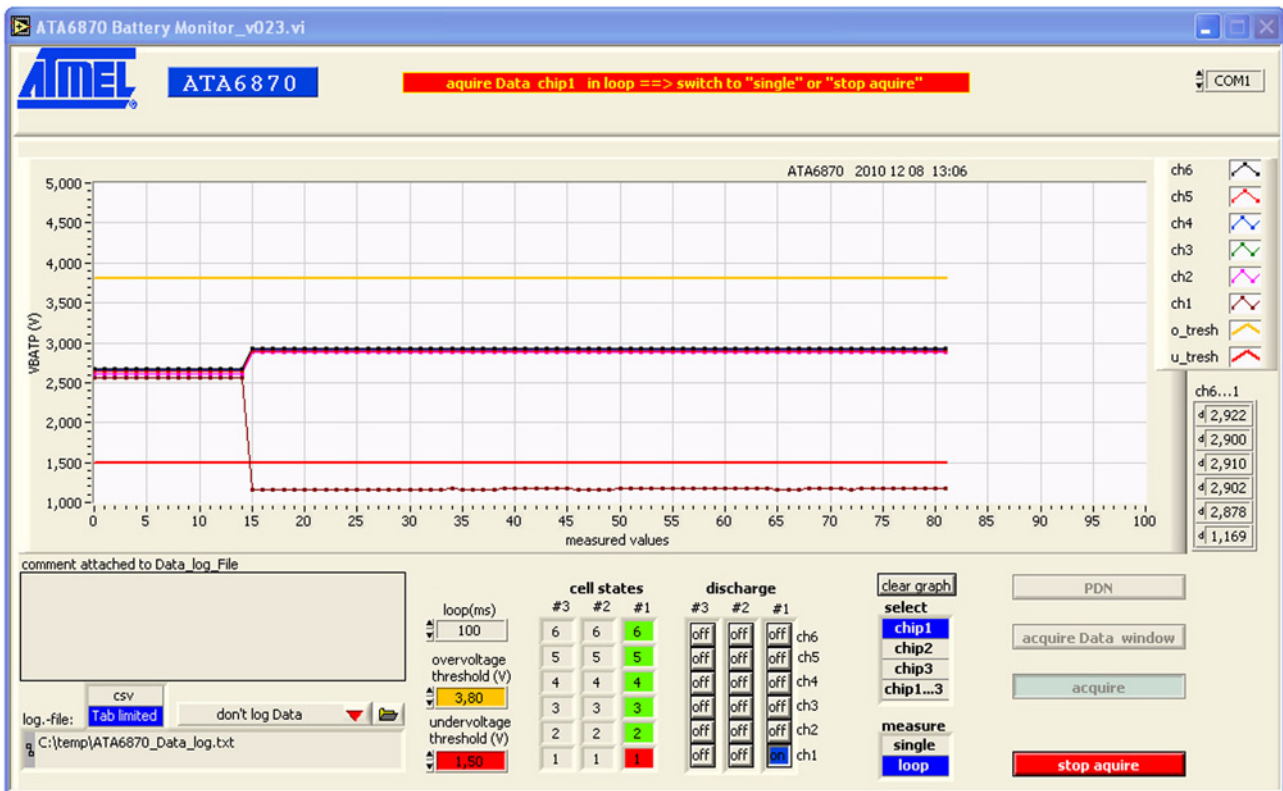
A threshold can be defined to detect an undervoltage of the connected battery cells.

4.1.11 Cell States

The cell status of each connected battery cell is displayed for all chips. If an over- or undervoltage of a battery cell is detected, the corresponding cell color on the panel will change, see Figure 4-3.

- Green cell: battery cell voltage in the defined voltage range
- Red cell: battery cell voltage exceeds the undervoltage limit
- Yellow cell: battery cell voltage exceeds the overvoltage limit

Figure 4-3. Standard User Panel with Over- and Undervoltage Detection



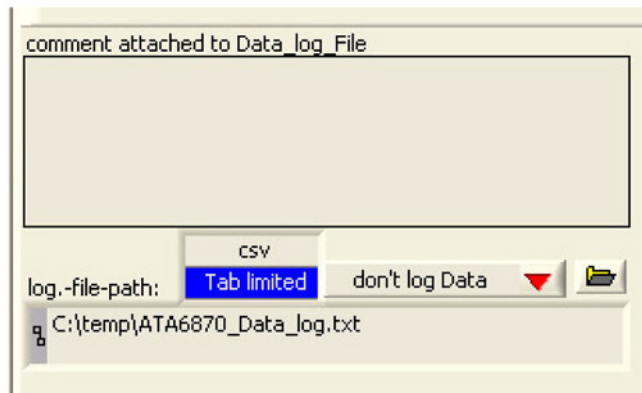
4.1.12 Data Logging

To save the measurement values of the monitored battery cells, a log file can be generated. The data logging is enabled/disabled by the toggle menu Data logging/don't log data.

The log file path can be written directly into the text box or set by a browser window, enabled by pushing the folder symbol.

A format selection of csv (comma separated variable) or tab limited format of the saved data is available.

Figure 4-4. Data Log File Generation



The data log file generation for up to 72 battery cells (12 ICs) is available on the “acquire data window” (see [Figure 4-5 on page 16](#)), which can be activated on the “standard user” and “advanced user” panel.

4.1.13 Clear Graph

Clears all displayed graphs from the window.

4.1.14 Stop

All acquisitions are stopped.

A second press of the stop button will halt the software, ready for closing.

4.1.15 Acquire Data Window

By pushing the **acquire data window** button a new panel appears on the screen (see [Figure 4-5 on page 16](#)).

The measurement values of up to 72 battery cells are displayed (12 ICs with 6 Cells per IC).

The **chip(s) acquire** window shows the selected number of ICs to be measured in **multi chip** mode.

The number can be inserted directly, or set by the provided slide bar.

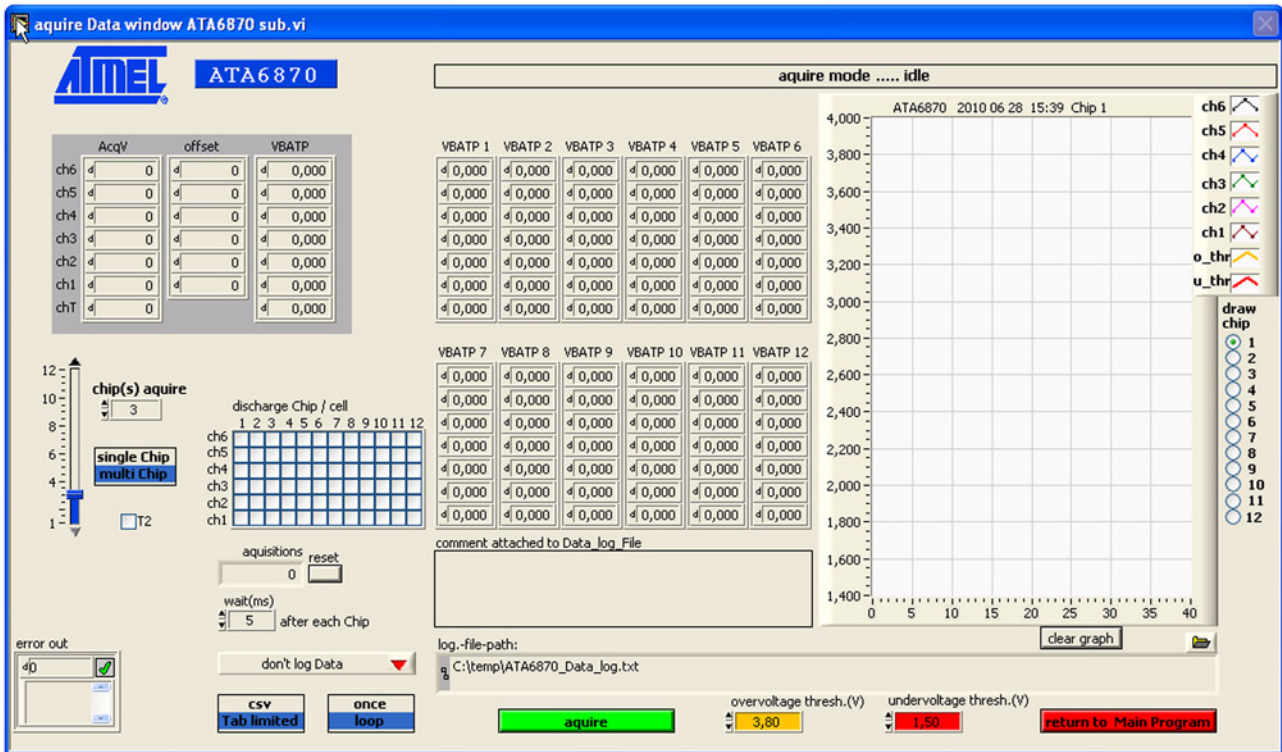
In **single chip** mode, only the cell values of the one selected IC are checked. For both, single chip and multi chip mode, the data logging function is provided.

Also the discharge function of up to 72 battery cells is available by the **discharge Chip/cell matrix**.

The data acquisition can be operated in **once** and **loop** mode.

If the loop mode is running, press once to stop the continuous data acquisition.

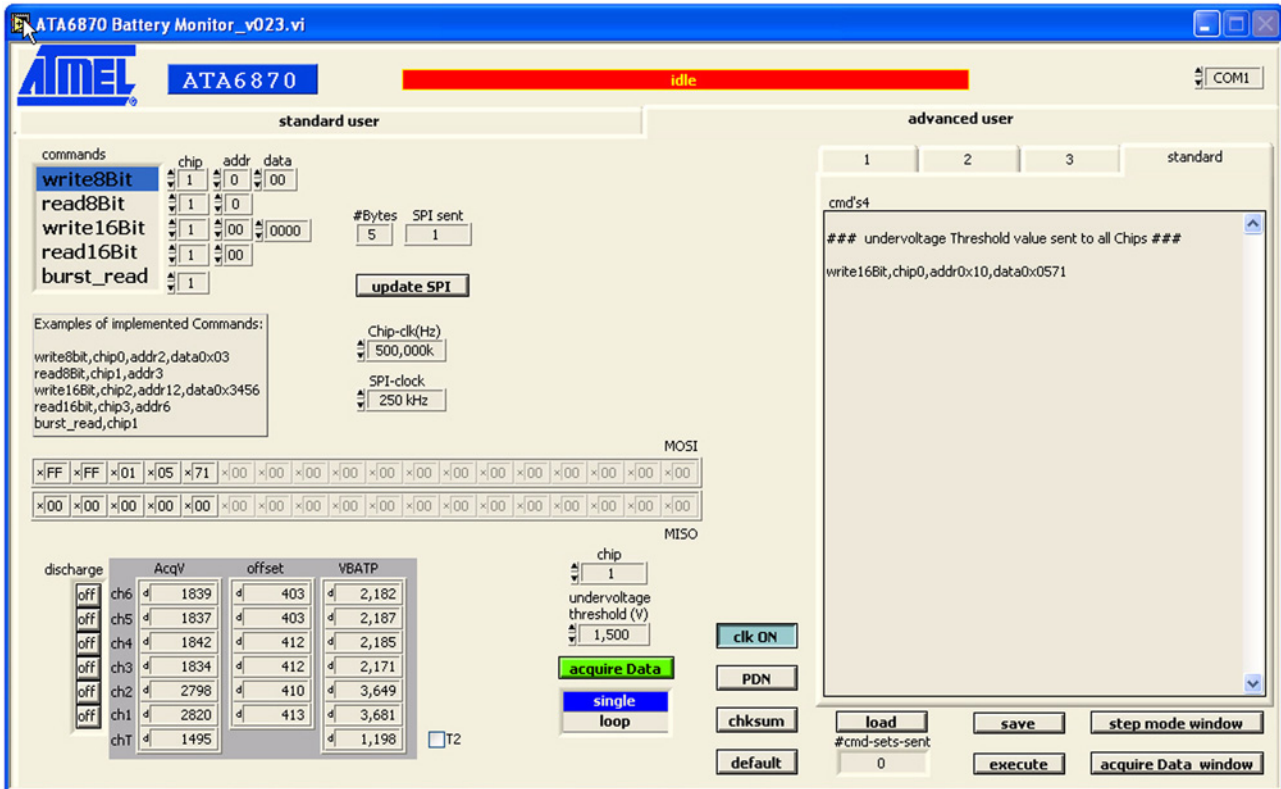
Figure 4-5. Acquire Data Window



4.2 Advanced User

For a more individual and detailed control of the evaluation system, the “advanced user” panel is provided. Single register can be controlled, and saved command files can be executed.

Figure 4-6. Advanced User Panel



Four command panels are at the user’s disposal. All of these are suitable to configure and execute commands. By default, the executed commands are displayed in the “standard” panel.

Command files can be saved, respectively loaded to/from a folder by using the corresponding **load** and **save** buttons.

The **execute** button starts the command transfer.

A list box is provided to display the decimal ADC values of the acquired data for each battery cell of the selected IC. The decimal ADC values are available for V(MBATi+1), gain and offset.

The calculated cell voltage VBATP is also displayed in this list box.

To achieve a correct data transfer with the respective register, 5 read/write commands are available:

- **Read/write8Bit** - read/write operation with all 8 bit registers
- **Read/write16Bit** - read/write operation with all 16 bit registers
- **Burst_read** - reads back all channel values (6 voltage + 1 temperature)

A register is addressed by selecting chip number (**chip**) and address (**addr**).

Update SPI transfers the inserted **data**.

4.2.1 MOSI/MISO

The transfer addresses and data are displayed for the respective write/read execution.

4.2.2 Clk ON

The toggle button enables/disables system clock

4.2.3 SoftRSTN

Resets Atmel® ATA6870 software.

4.2.4 Default

Sets the controller board into default conditions.

4.2.5 CLK

The system clock frequency is set.

4.2.6 SPI-clock

The frequency of the serial data transfer is set.

4.2.7 Step Mode

To execute a command stack in single steps, a **step mode** is provided, see [Figure 4-7](#).

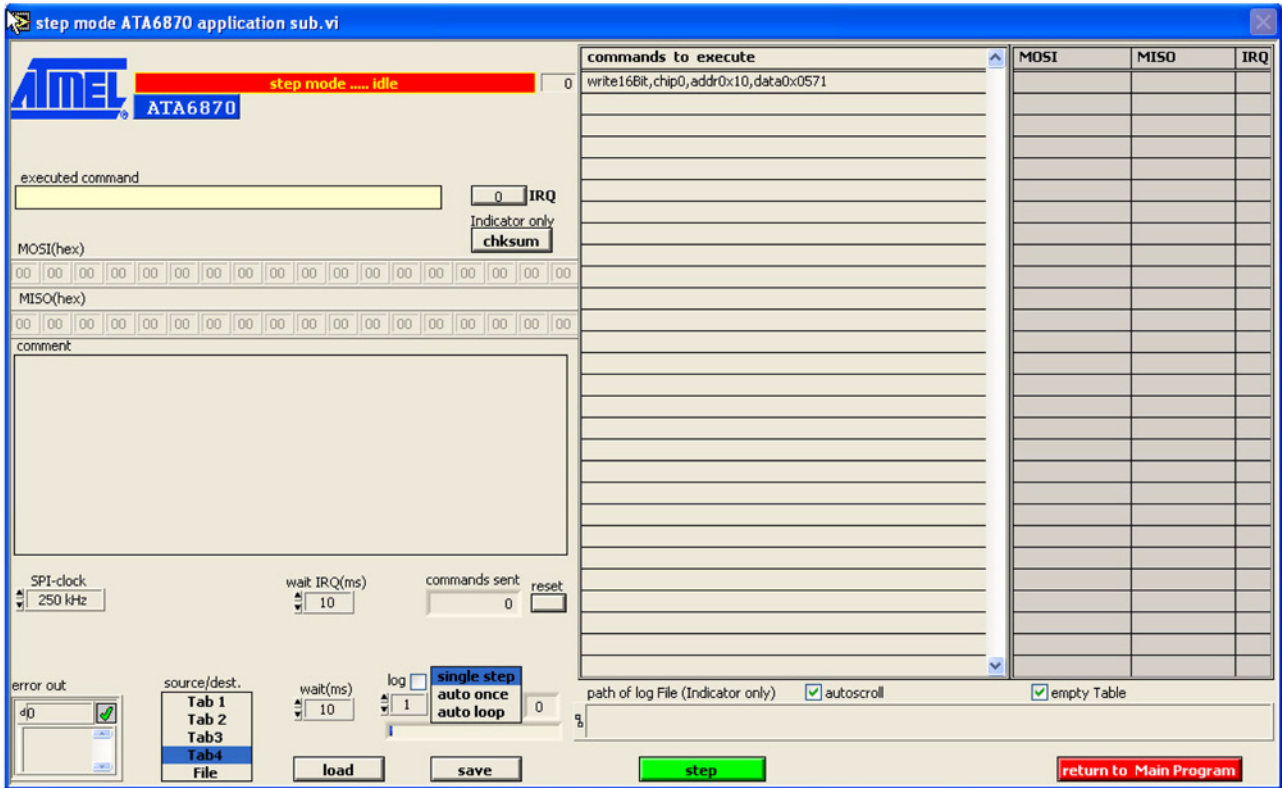
The **step** button executes a **single step**, an **auto once** or an **auto loop** operation.

Command panel 1 to panel 4 (**Tab1** to **Tab4**) or a saved **file** represent the source for the step mode operation.

The time interval between two steps is adjustable by the **wait** timer.

Atmel ATA6870 Description of Evaluation Board

Figure 4-7. Step Mode

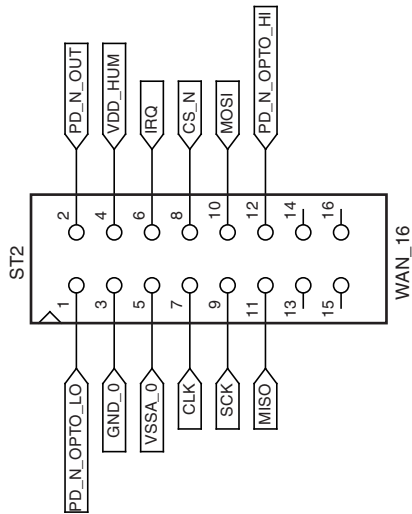
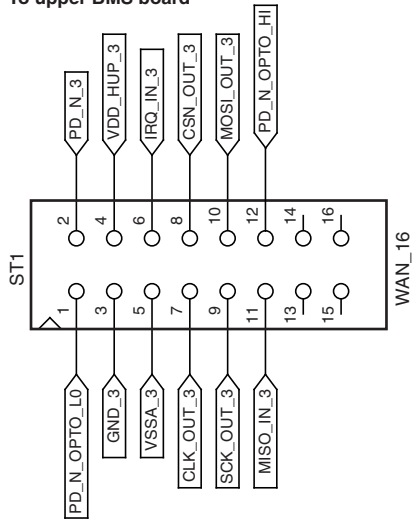


Atmel ATA6870 Description of Evaluation Board

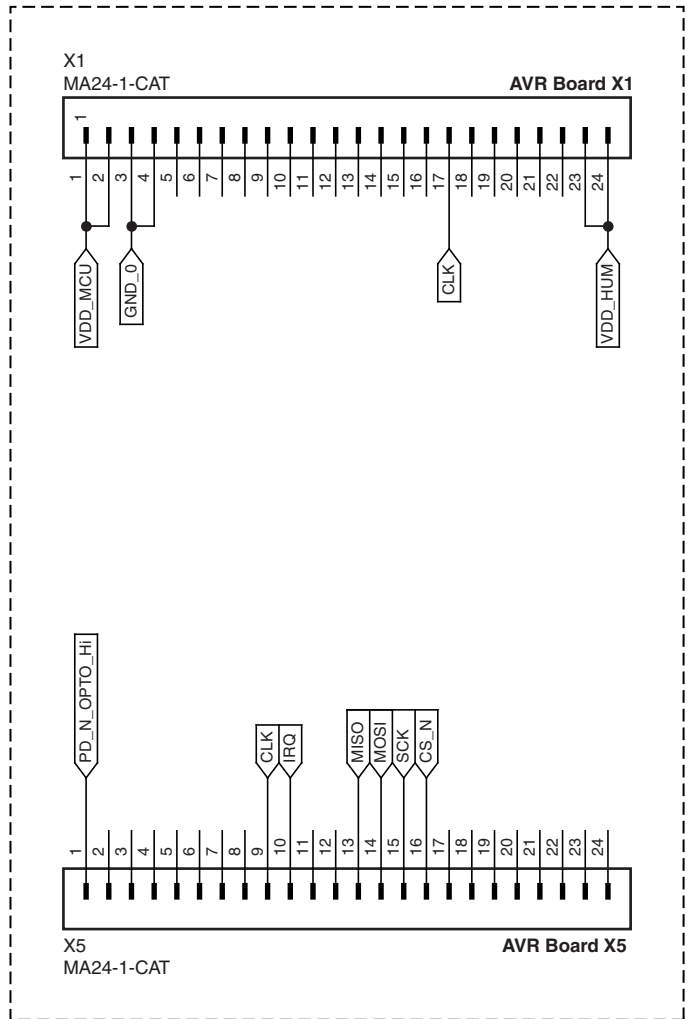
5.2 Interfaces to Controller Board and Additional Stacked Evaluation Boards

Figure 5-2. Interfaces of the Atmel® ATA6870 Evaluation Board

To upper BMS board

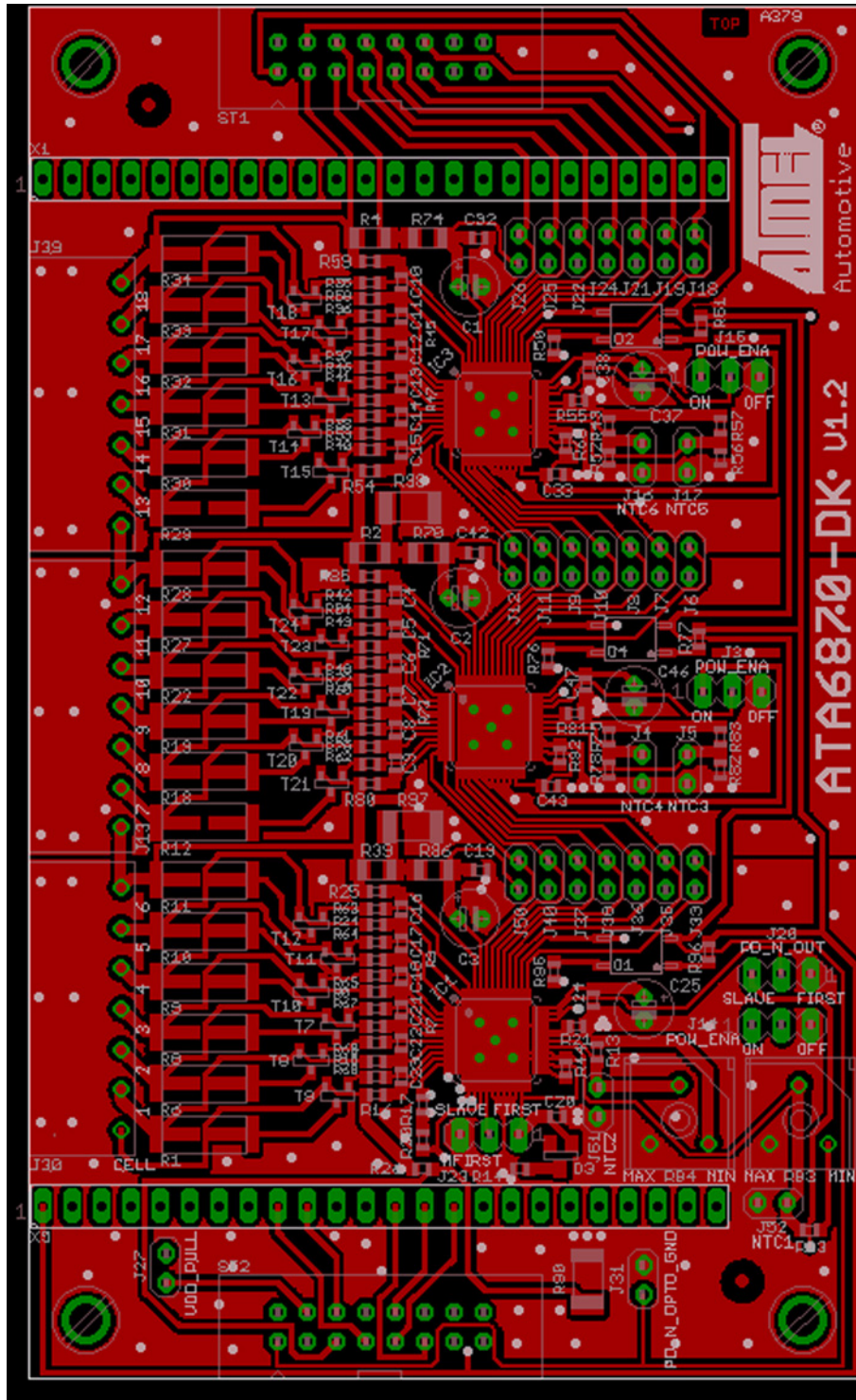


To lower BMS board



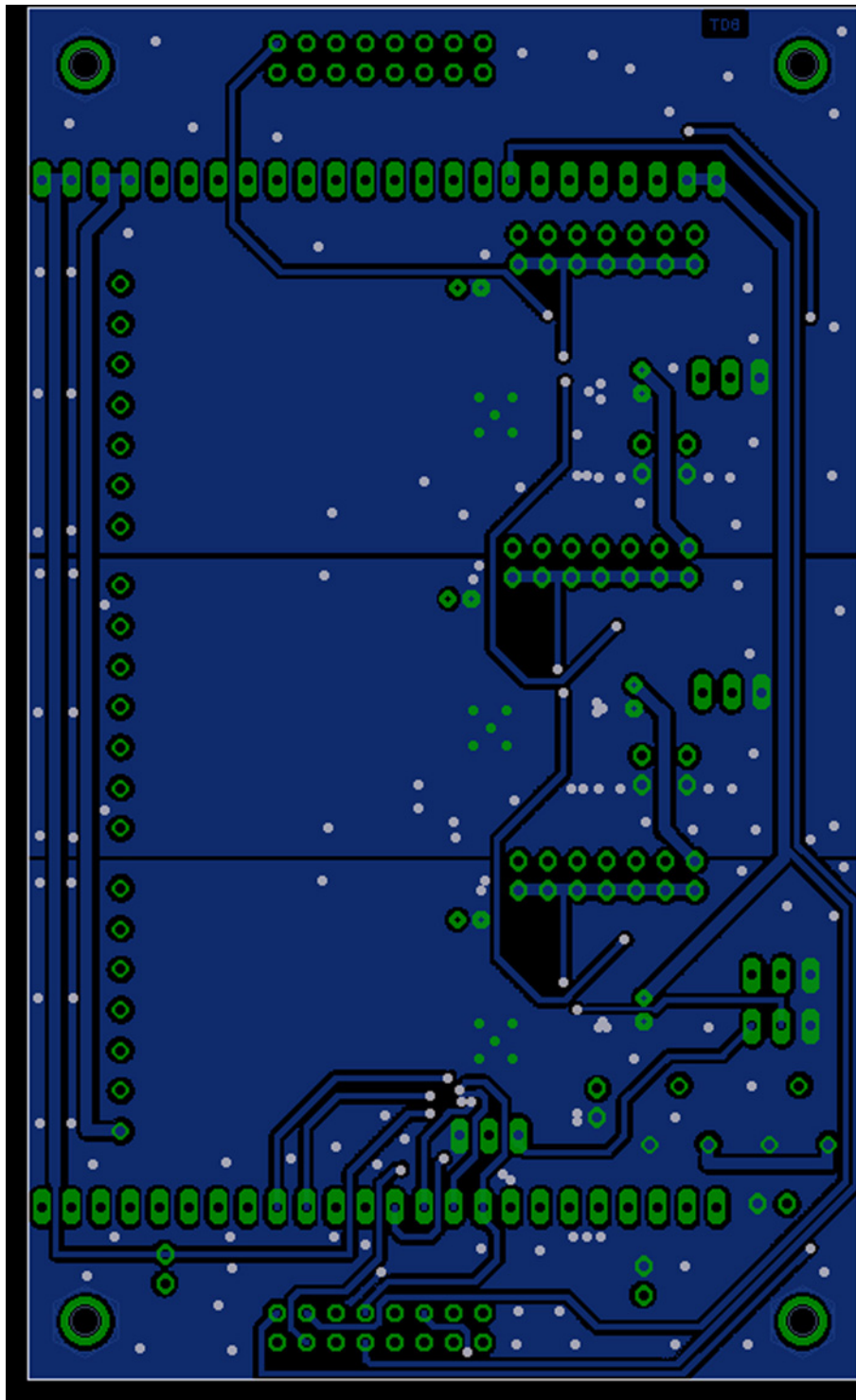
5.3 Evaluation Board Layout and Component Placement

Figure 5-3. Component Placement and Layout Top View



Atmel ATA6870 Description of Evaluation Board

Figure 5-4. Board Layout Bottom View





Atmel Corporation
2325 Orchard Parkway
San Jose, CA 95131
USA
Tel: (+1)(408) 441-0311
Fax: (+1)(408) 487-2600

Atmel Asia Limited
Unit 01-5 & 16, 19/F
BEA Tower, Millennium City 5
418 Kwun Tong Road
Kwun Tong, Kowloon
HONG KONG
Tel: (+852) 2245-6100
Fax: (+852) 2722-1369

Atmel Munich GmbH
Business Campus
Parking 4
D-85748 Garching b. Munich
GERMANY
Tel: (+49) 89-31970-0
Fax: (+49) 89-3194621

Atmel Japan
9F, Tonetsu Shinkawa Bldg.
1-24-8 Shinkawa
Chuo-ku, Tokyo 104-0033
JAPAN
Tel: (+81) (3) 3523-3551
Fax: (+81) (3) 3523-7581

© 2010 Atmel Corporation. All rights reserved. / Rev.: 9162D-AUTO-12/10

Atmel®, Atmel logo and combinations thereof, AVR® and others are registered trademarks or trademarks of Atmel Corporation or its subsidiaries. Windows® is a registered trademark of Microsoft Corporation in the US and/or other countries. Other terms and product names may be trademarks of others.

Disclaimer: The information in this document is provided in connection with Atmel products. No license, express or implied, by estoppel or otherwise, to any intellectual property right is granted by this document or in connection with the sale of Atmel products. EXCEPT AS SET FORTH IN THE ATMEL TERMS AND CONDITIONS OF SALES LOCATED ON THE ATMEL WEBSITE, ATMEL ASSUMES NO LIABILITY WHATSOEVER AND DISCLAIMS ANY EXPRESS, IMPLIED OR STATUTORY WARRANTY RELATING TO ITS PRODUCTS INCLUDING, BUT NOT LIMITED TO, THE IMPLIED WARRANTY OF MERCHANTABILITY, FITNESS FOR A PARTICULAR PURPOSE, OR NON-INFRINGEMENT. IN NO EVENT SHALL ATMEL BE LIABLE FOR ANY DIRECT, INDIRECT, CONSEQUENTIAL, PUNITIVE, SPECIAL OR INCIDENTAL DAMAGES (INCLUDING, WITHOUT LIMITATION, DAMAGES FOR LOSS AND PROFITS, BUSINESS INTERRUPTION, OR LOSS OF INFORMATION) ARISING OUT OF THE USE OR INABILITY TO USE THIS DOCUMENT, EVEN IF ATMEL HAS BEEN ADVISED OF THE POSSIBILITY OF SUCH DAMAGES. Atmel makes no representations or warranties with respect to the accuracy or completeness of the contents of this document and reserves the right to make changes to specifications and products descriptions at any time without notice. Atmel does not make any commitment to update the information contained herein. Unless specifically provided otherwise, Atmel products are not suitable for, and shall not be used in, automotive applications. Atmel products are not intended, authorized, or warranted for use as components in applications intended to support or sustain life.